

STAATSTRASSE 2181

L27/6

L27/18

L27/17

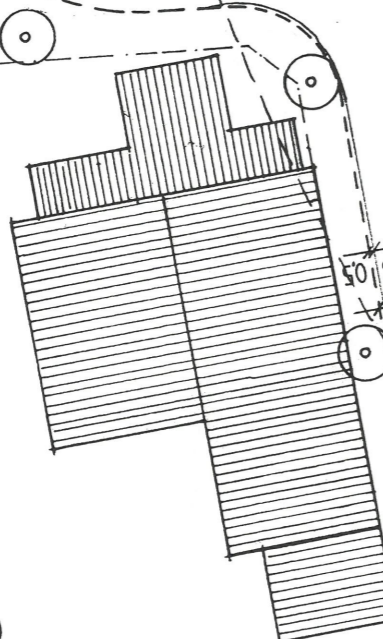
20m

14

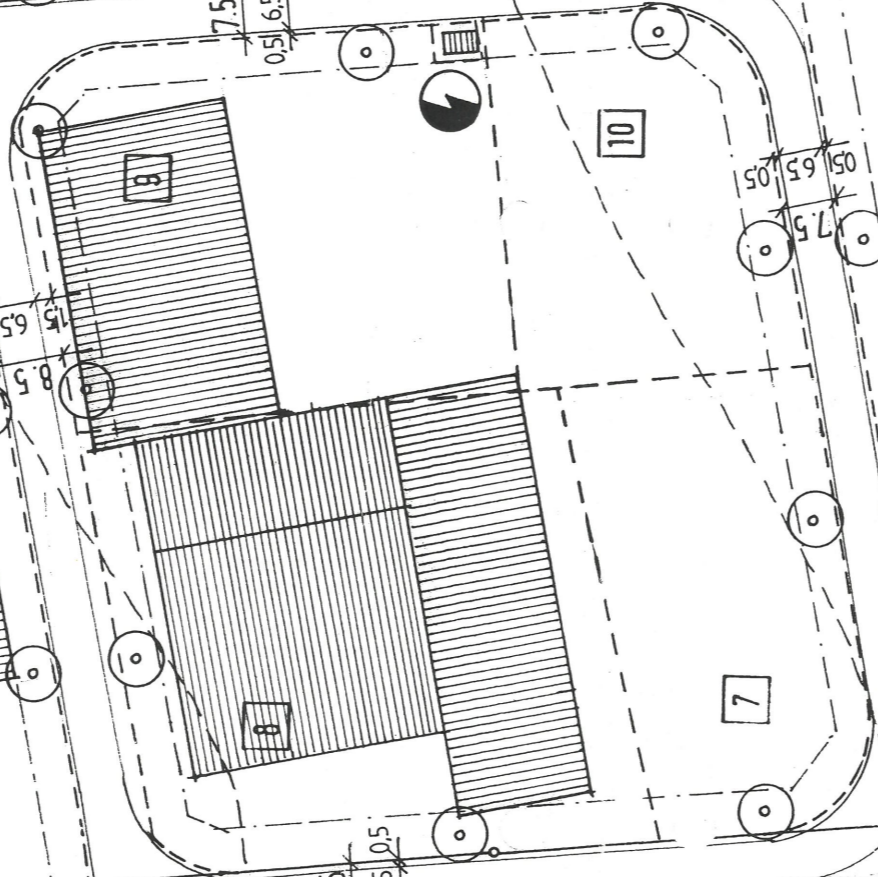
13

12

11



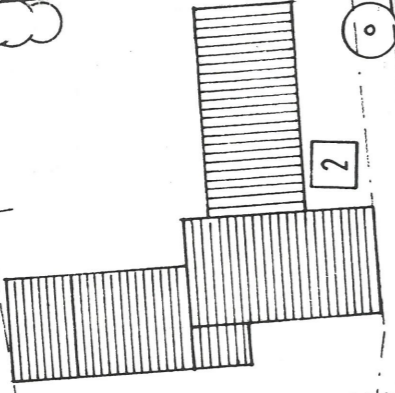
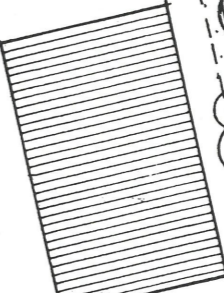
3



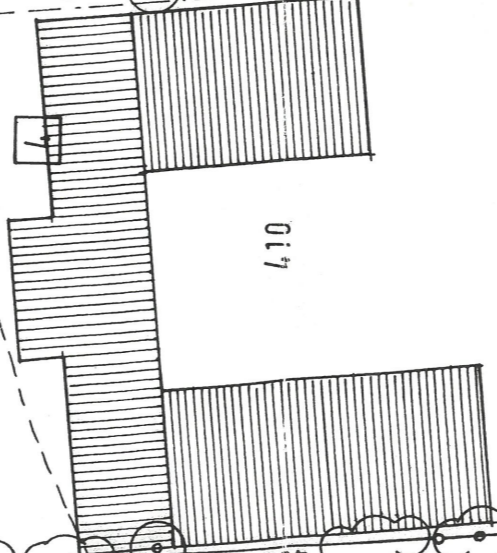
10

7

6



2



1

4.10

6.07

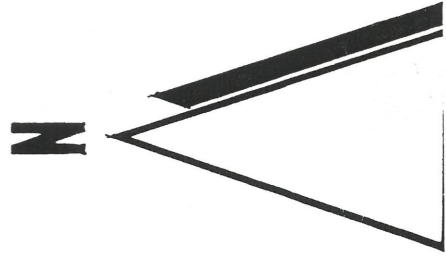
7.5  
0.5 | 6.5 | 0.5

7.5  
0.5 | 6.5 | 0.5

7.5  
0.5 | 6.5 | 0.5

Nicht ausgebauter Weg  
(nur landw. Verkehr)

GE	
GRZ	0.8
BMZ	3.5



366